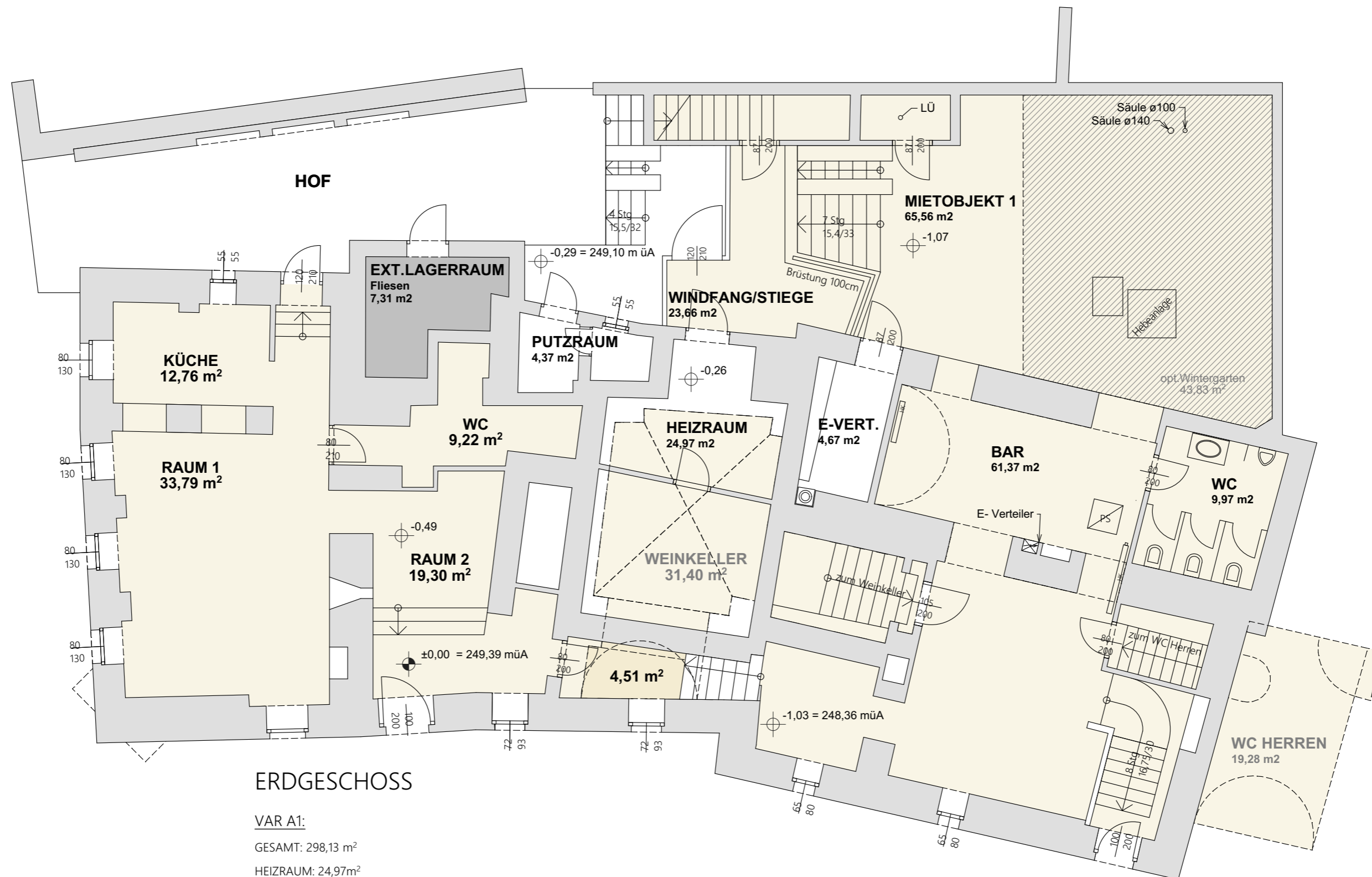


EBERSMÜLLER - SEIFENSIEDERHAUS,
VERKAUFSPLÄNE

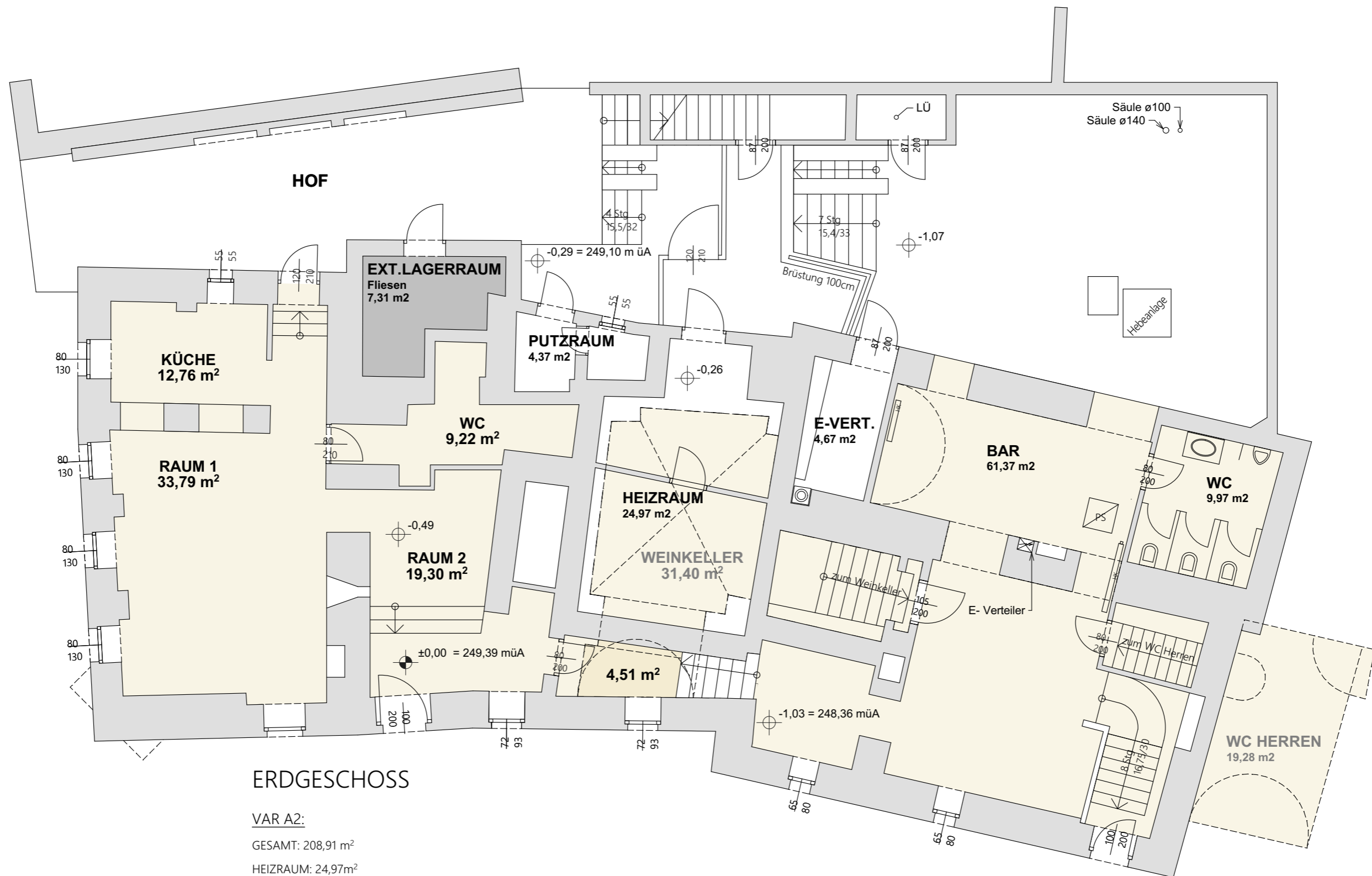
Version 1.2 | Datum: 23.06.2022



ERDGESCHOSS

VAR A1:

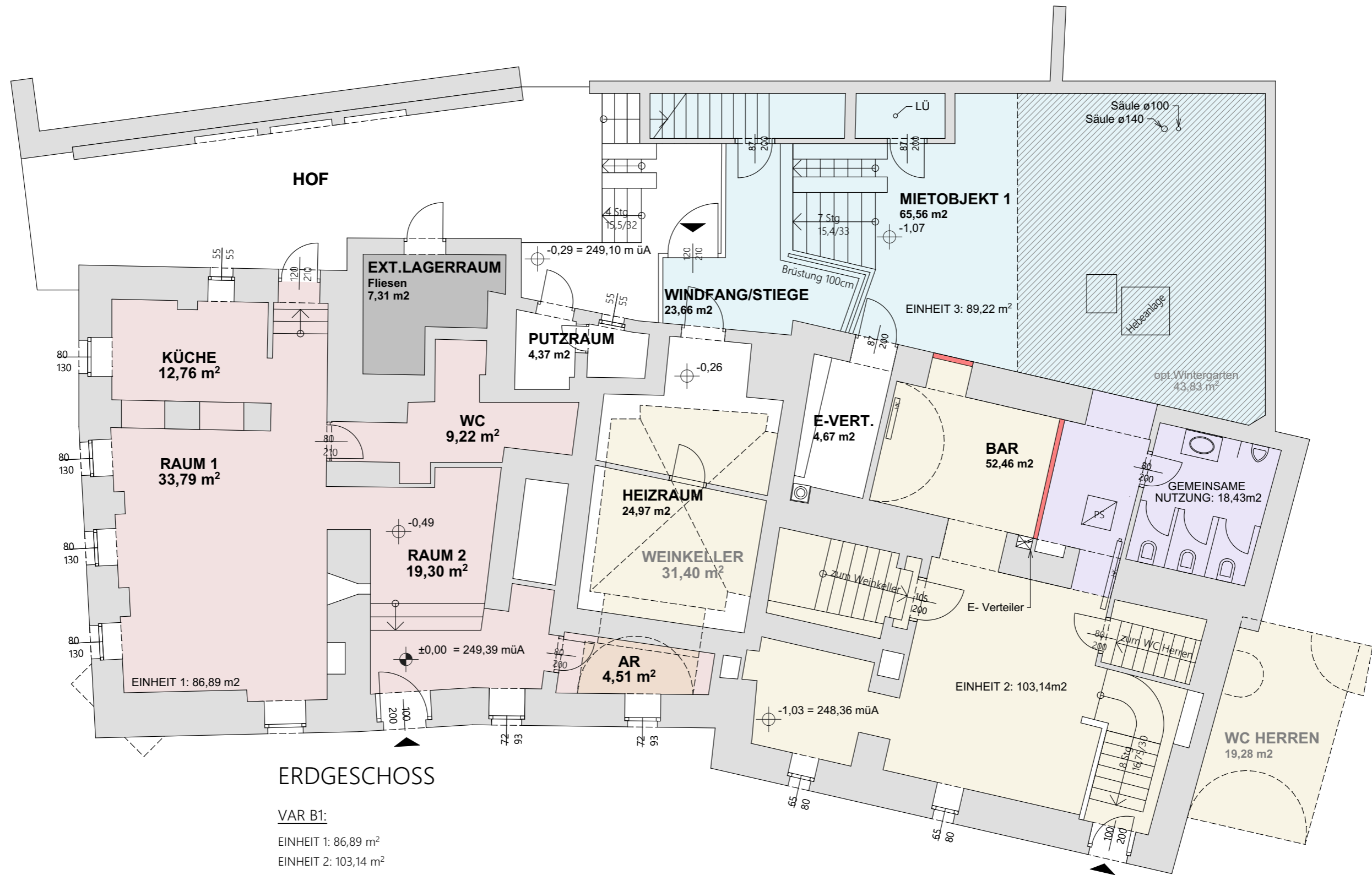
- GESAMT: 298,13 m²
- HEIZRAUM: 24,97m²
- E-VERT: 4,67m²
- PUTZRAUM: 4,37m²



ERDGESCHOSS

VAR A2:

- GESAMT: 208,91 m²
- HEIZRAUM: 24,97m²
- E-VERT: 4,67m²
- PUTZRAUM: 4,37m²

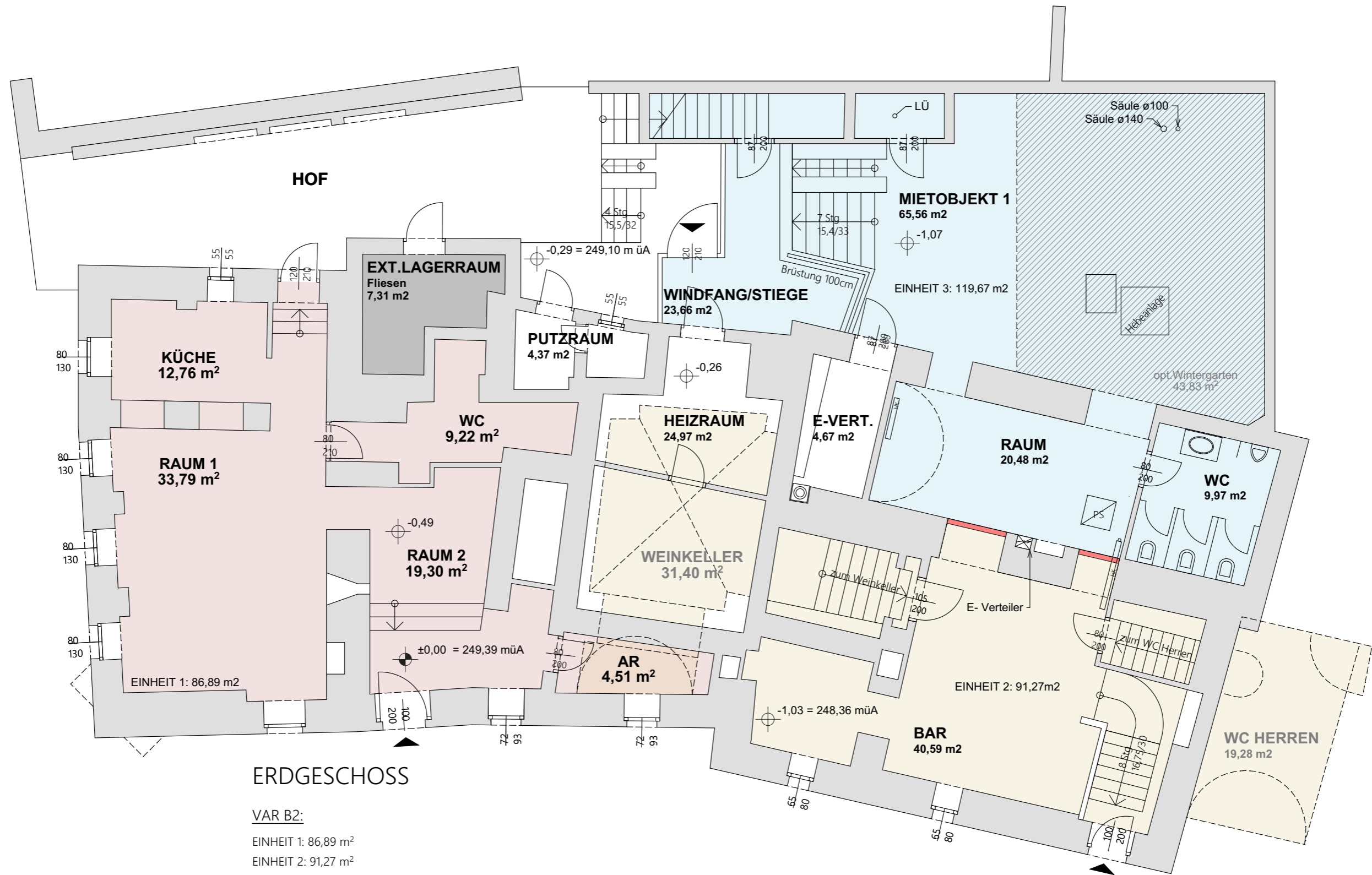


ERDGESCHOSS

VAR B1:

- EINHEIT 1: 86,89 m²
- EINHEIT 2: 103,14 m²
- EINHEIT 3: 89,22 m²
- GEMEINSAME NUTZUNG: 18,43 m²

- HEIZRAUM: 24,97m²
- E-VERT.: 4,67m²
- PUTZRAUM: 4,37m²

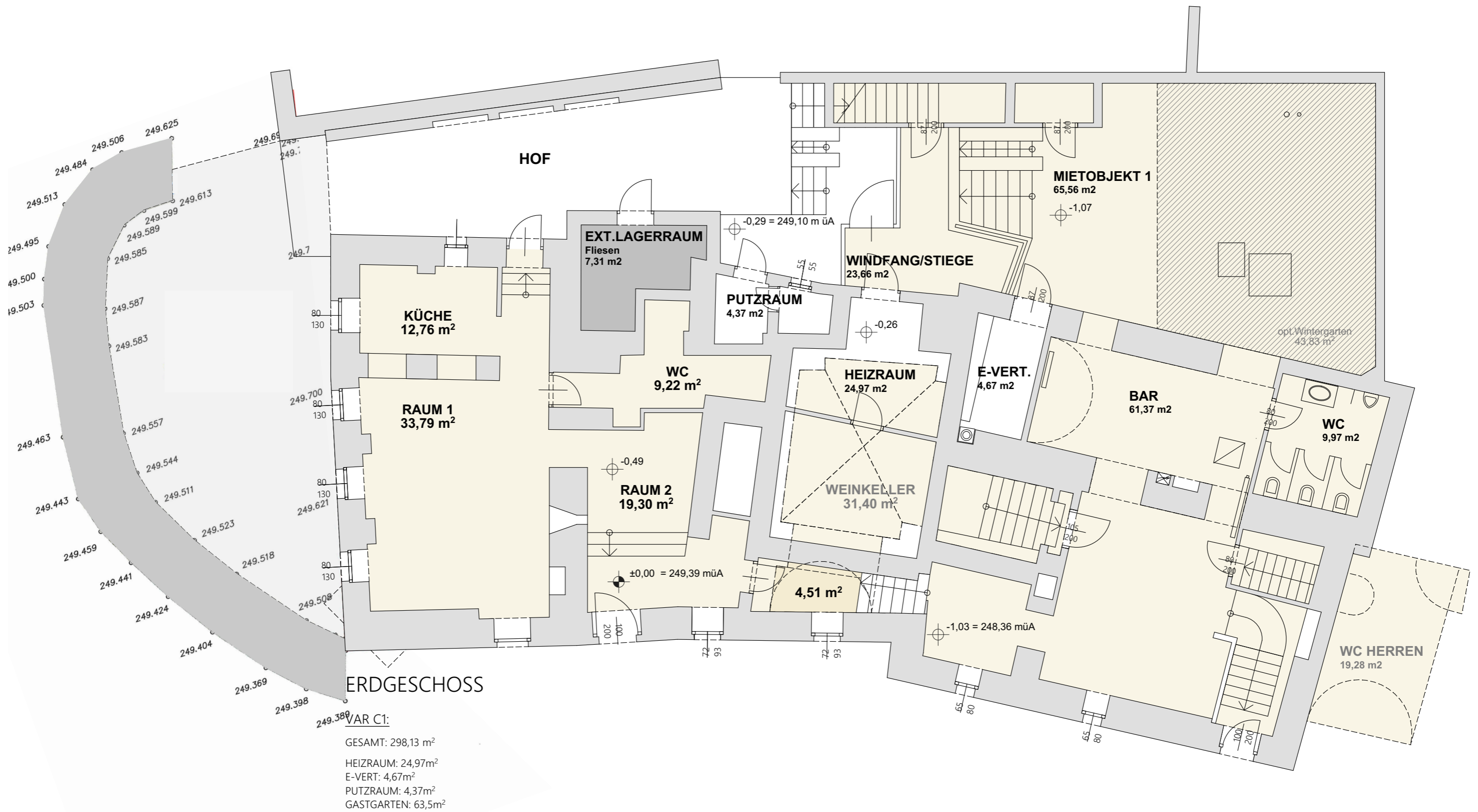


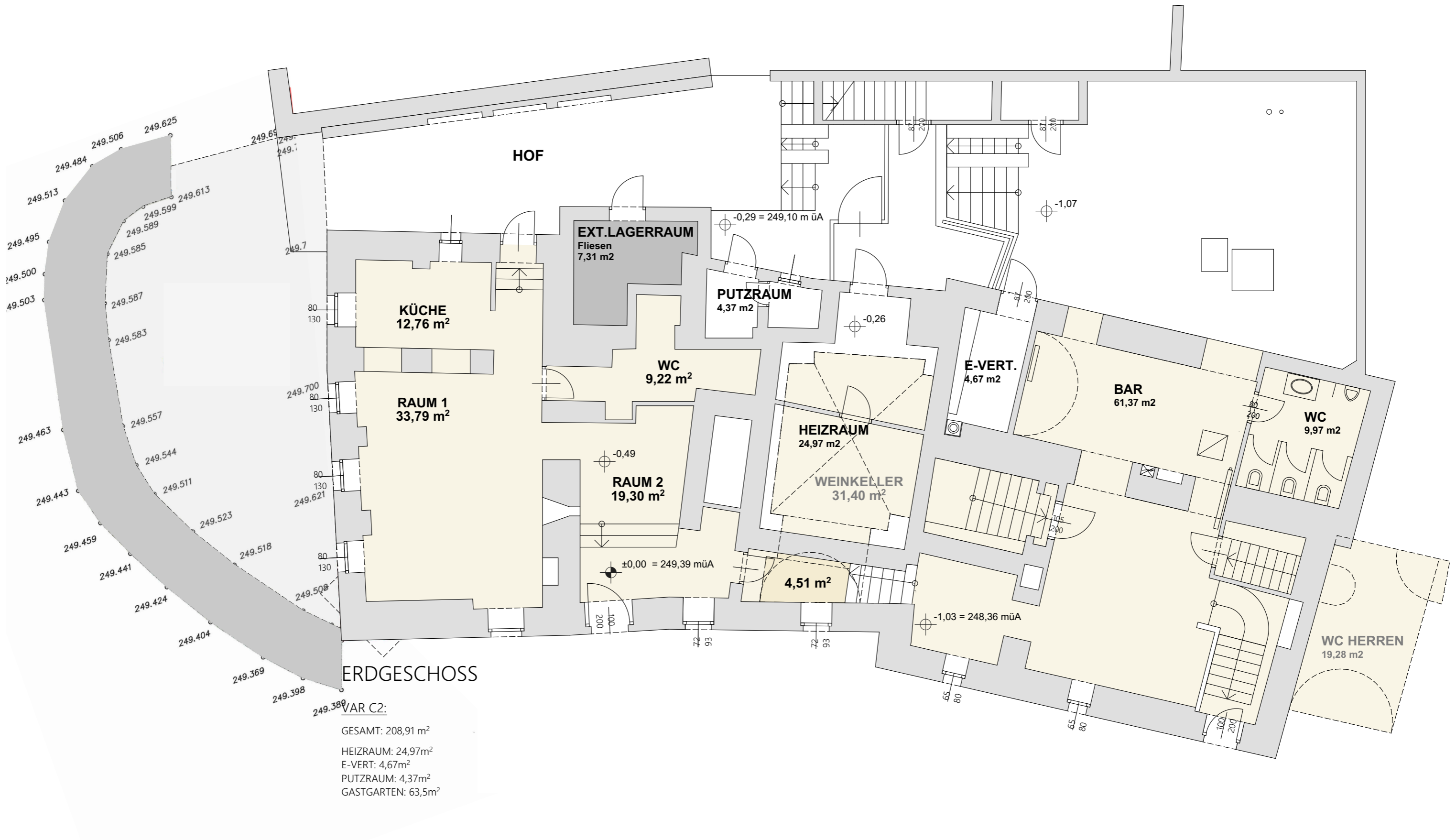
ERDGESCHOSS

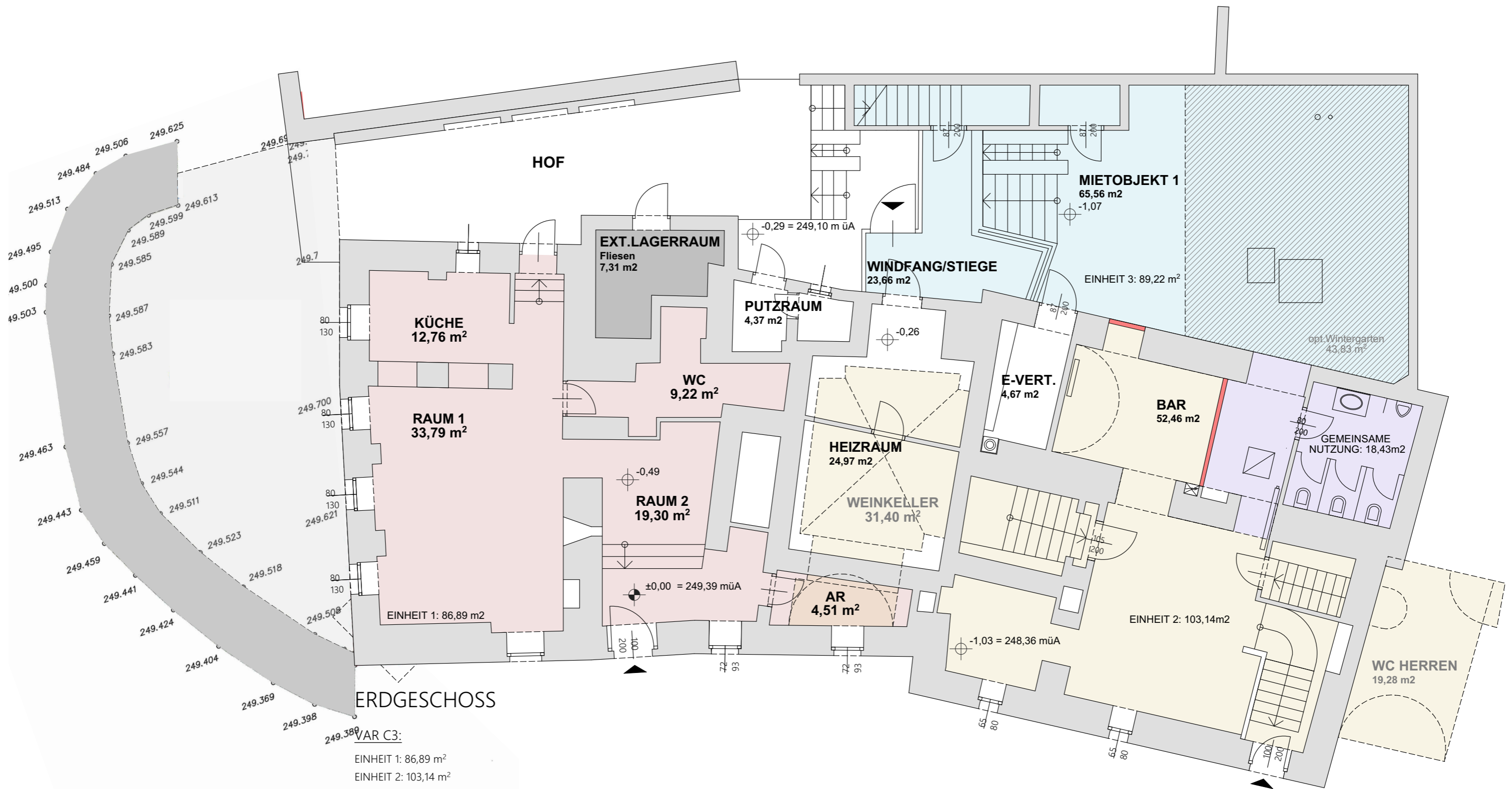
VAR B2:

- EINHEIT 1: 86,89 m²
- EINHEIT 2: 91,27 m²
- EINHEIT 3: 119,67 m²

- HEIZRAUM: 24,97m²
- E-VERT: 4,67m²
- PUTZRAUM: 4,37m²



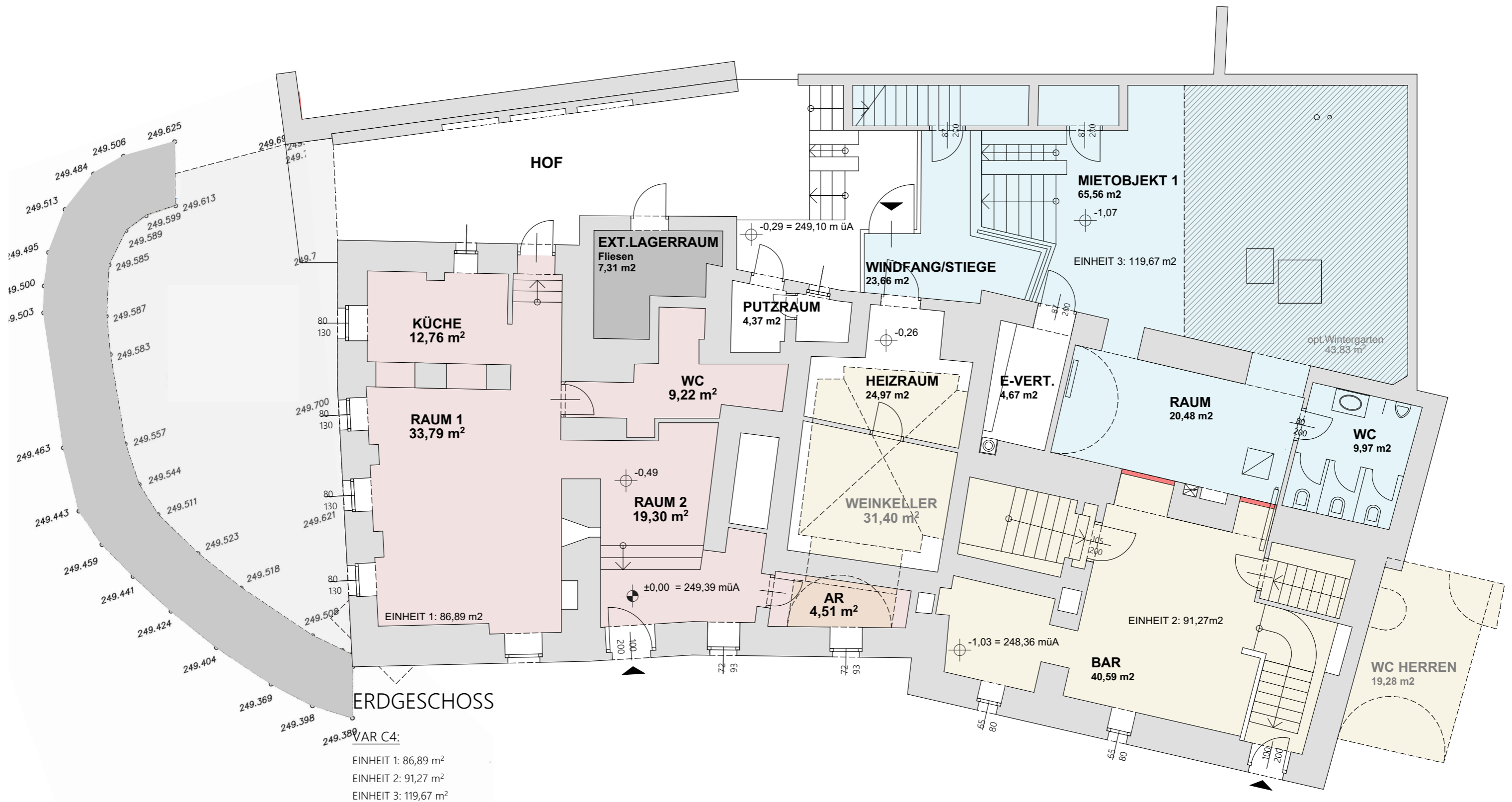


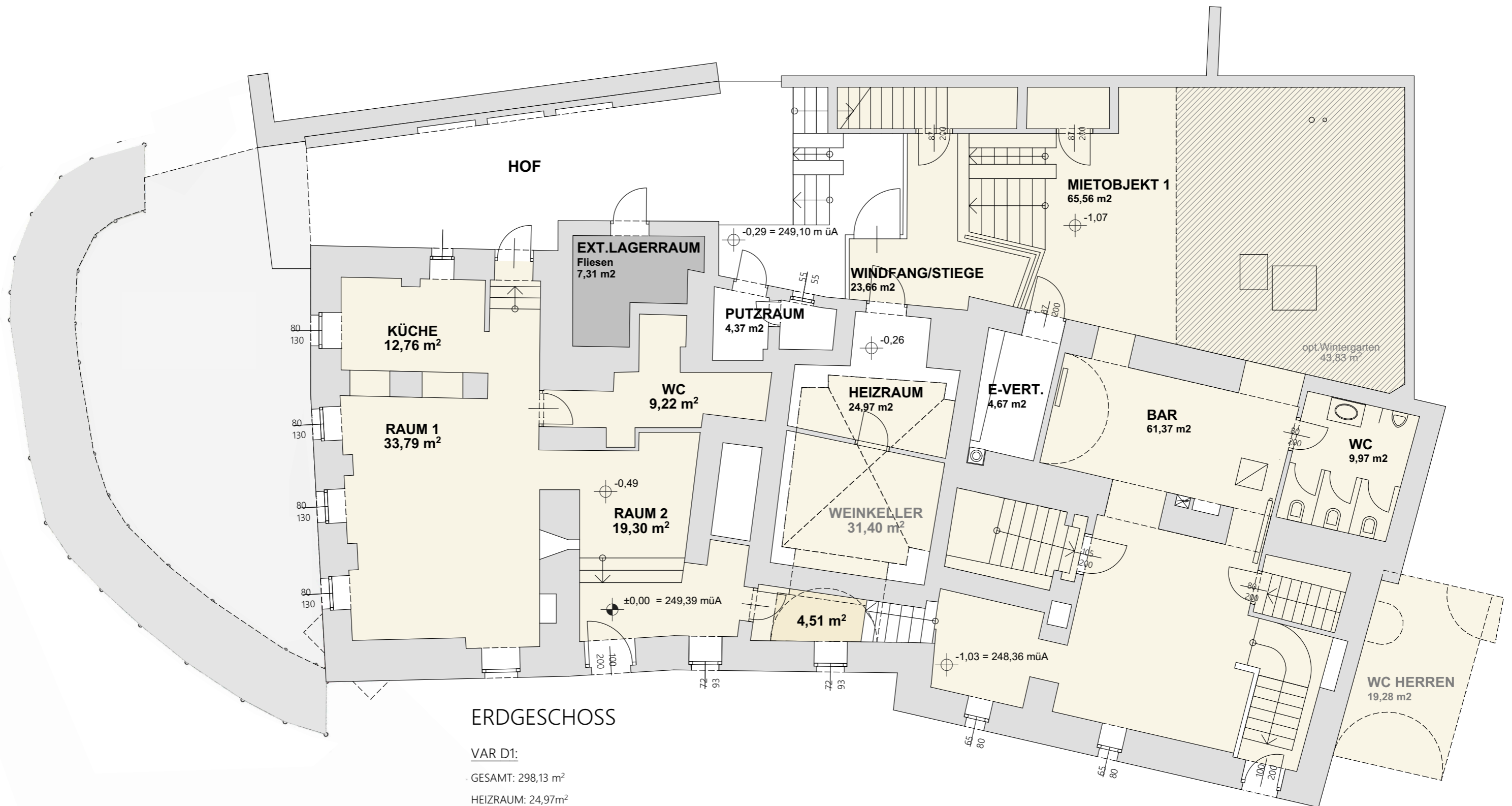


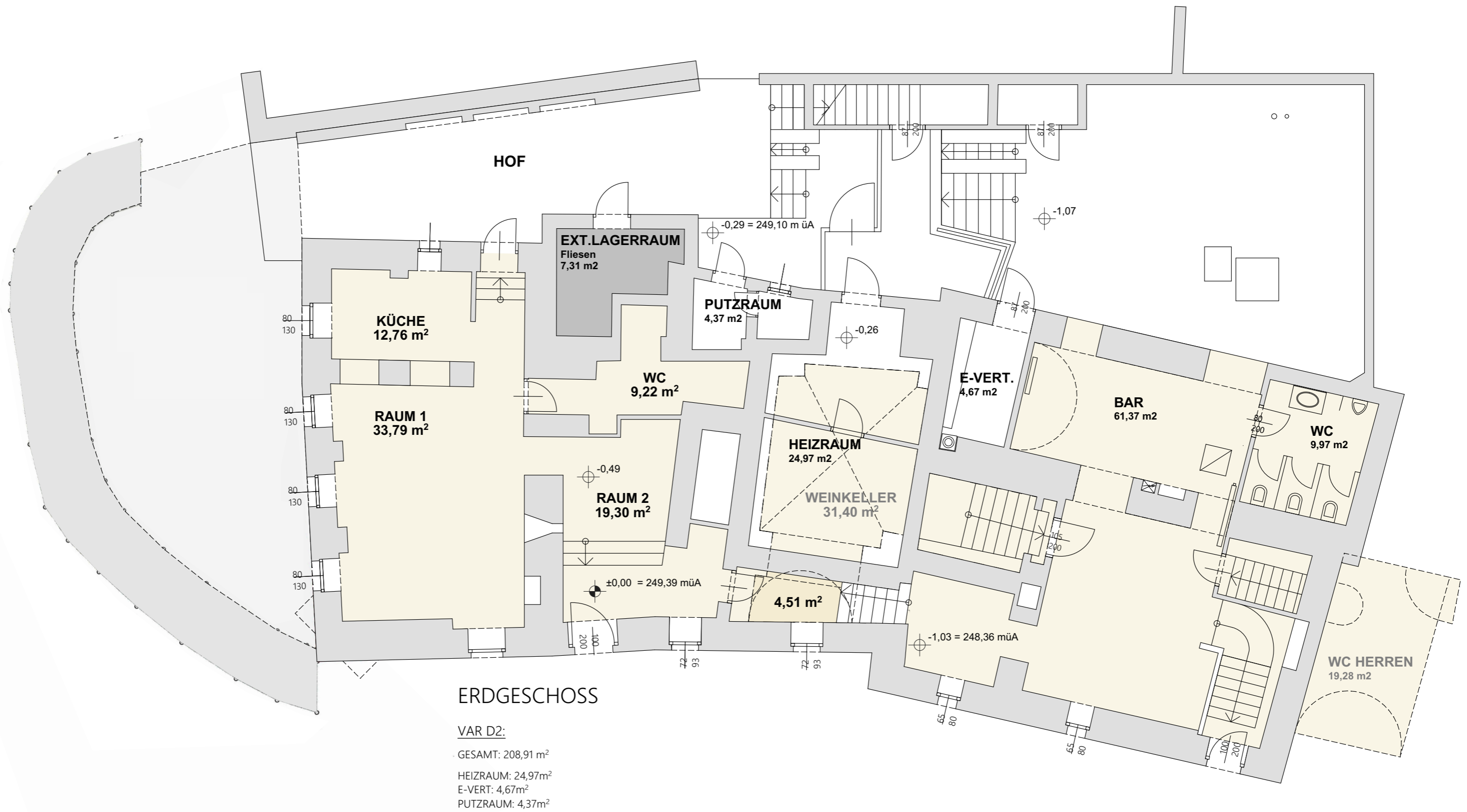
ERDGESCHOSS

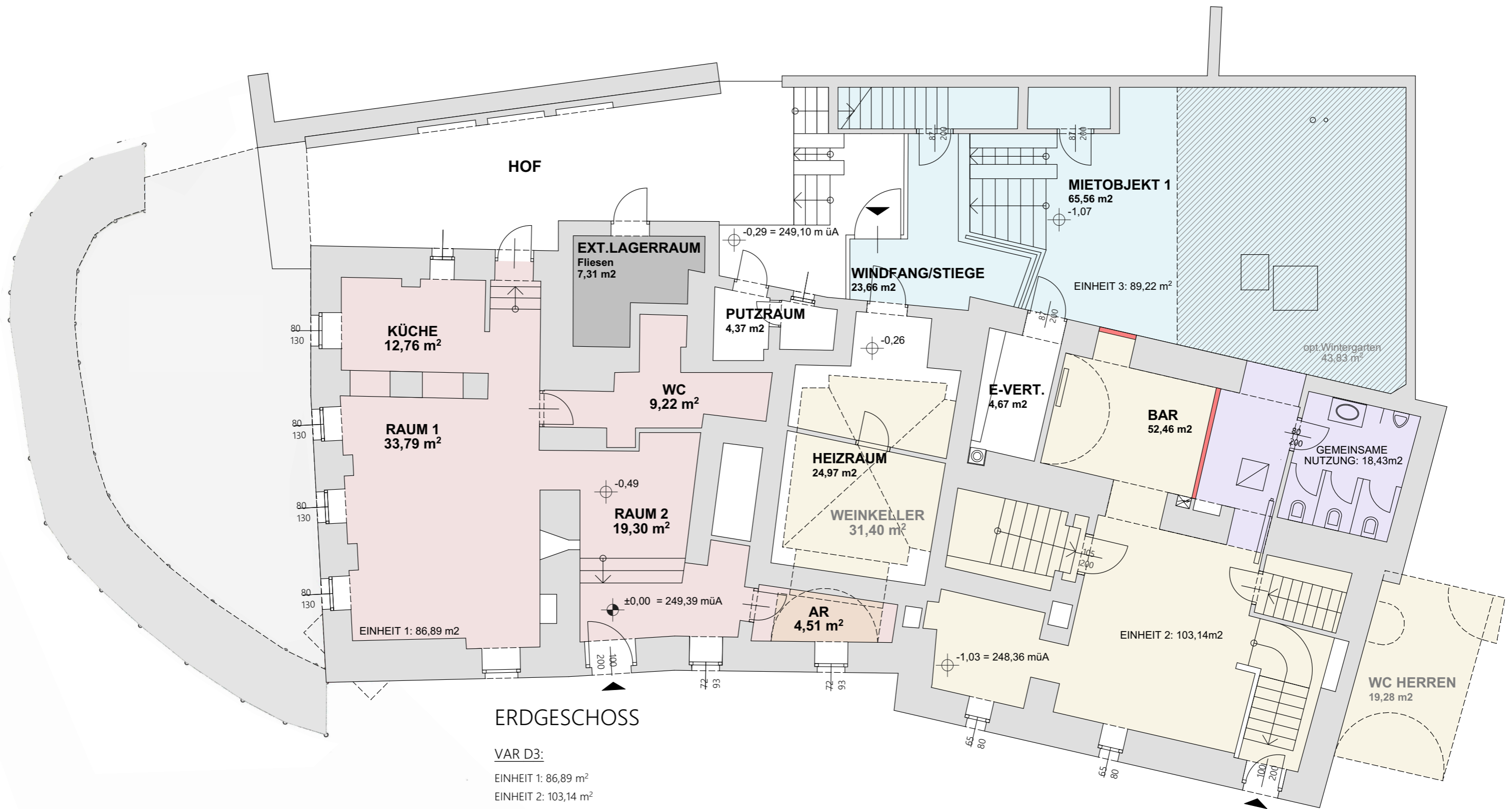
VAR C3:

- EINHEIT 1: 86,89 m²
- EINHEIT 2: 103,14 m²
- EINHEIT 3: 89,22 m²
- GEMEINSAME NUTZUNG: 18,43 m²
- HEIZRAUM: 24,97m²
- E-VERT: 4,67m²
- PUTZRAUM: 4,37m²
- GASTGARTEN: 63,5m²







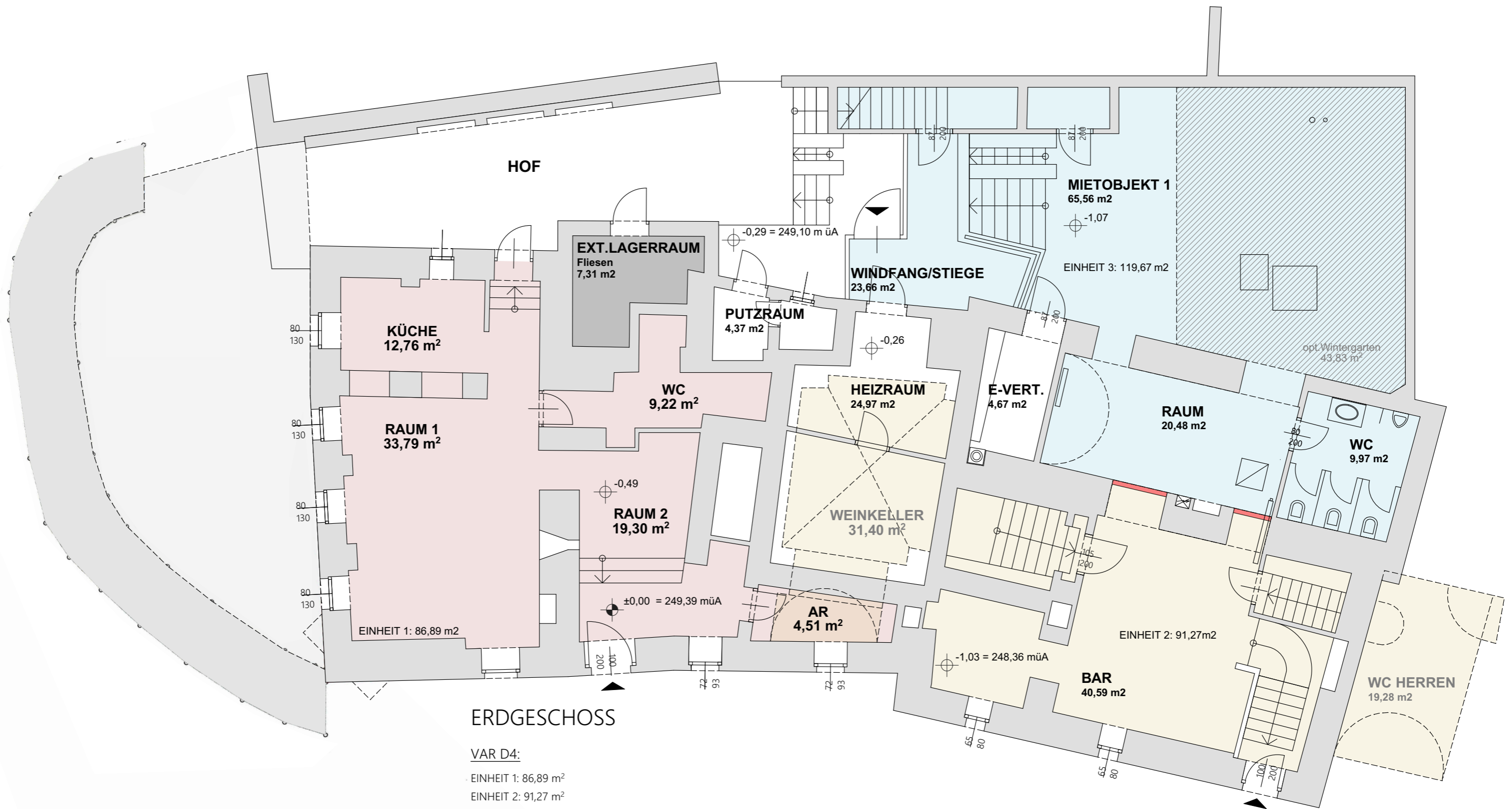


ERDGESCHOSS

VAR D3:

EINHEIT 1: 86,89 m²
 EINHEIT 2: 103,14 m²
 EINHEIT 3: 89,22 m²
 GEMEINSAME NUTZUNG: 18,43 m²

HEIZRAUM: 24,97m²
 E-VERT: 4,67m²
 PUTZRAUM: 4,37m²



ERDGESCHOSS

VAR D4:

- EINHEIT 1: 86,89 m²
- EINHEIT 2: 91,27 m²
- EINHEIT 3: 119,67 m²

- HEIZRAUM: 24,97m²
- E-VERT: 4,67m²
- PUTZRAUM: 4,37m²